

Forest Health *in* Renfrew County 2020

Lacey Rose, R.P.F.

County Forester

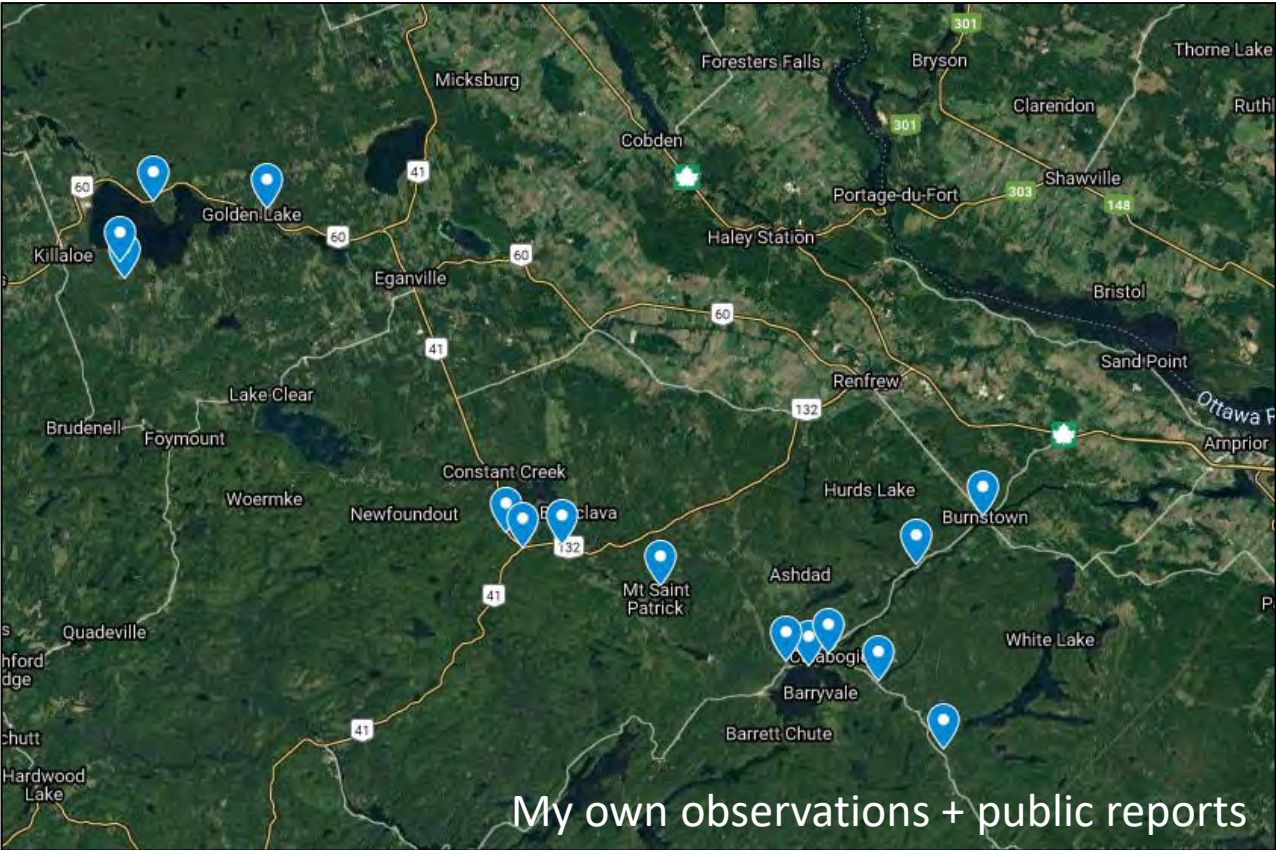
County of Renfrew

lrose@countyofrenfrew.on.ca

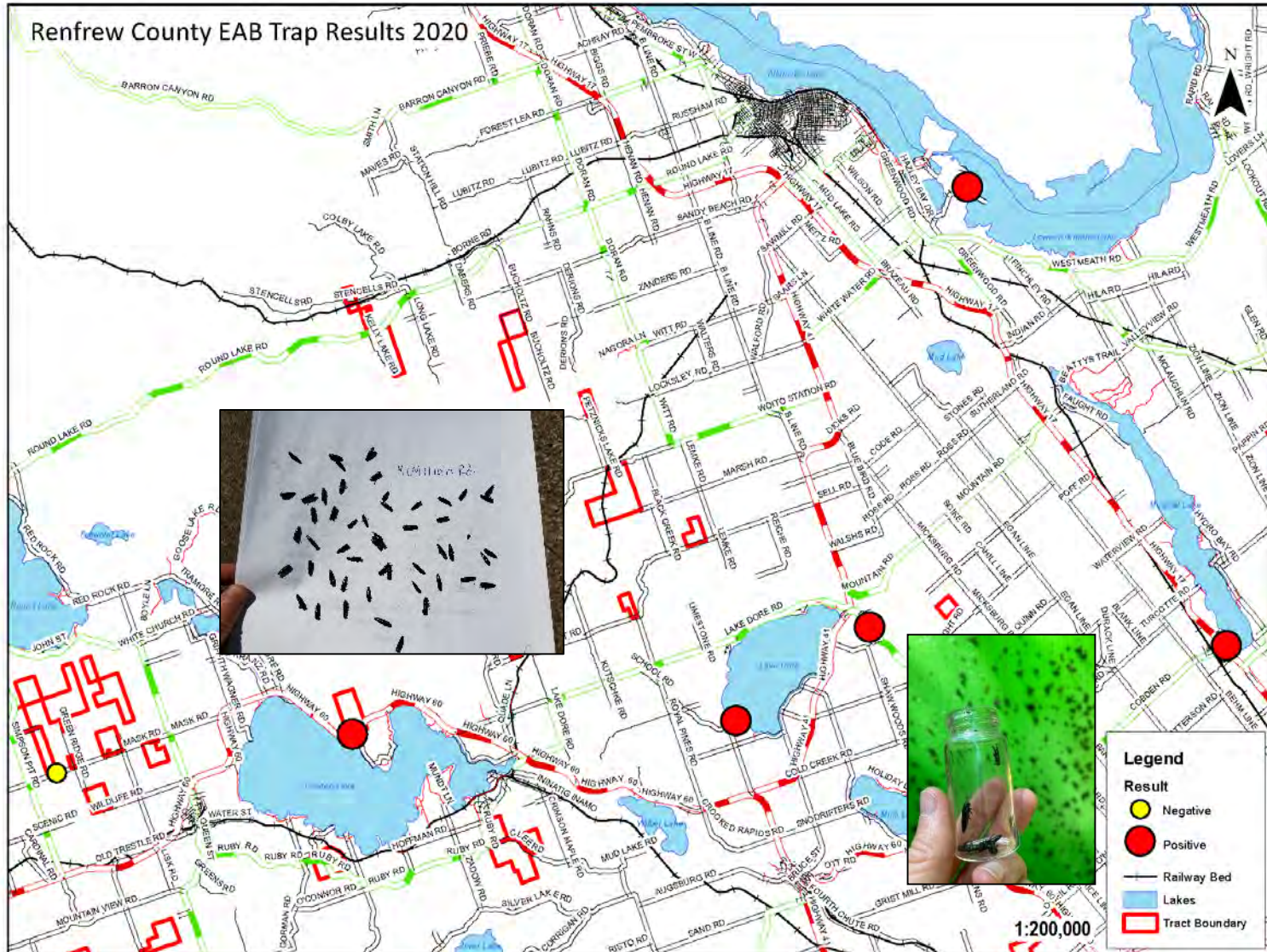


Gypsy Moth

- Hot topic of 2020
- Public inquires
- Pressure on some municipalities to take action
- Heavy infestation in Calabogie-Burnstown area - looked like fall!
- 2021... more inquiries likely, thanks for the resources!



Emerald Ash Borer

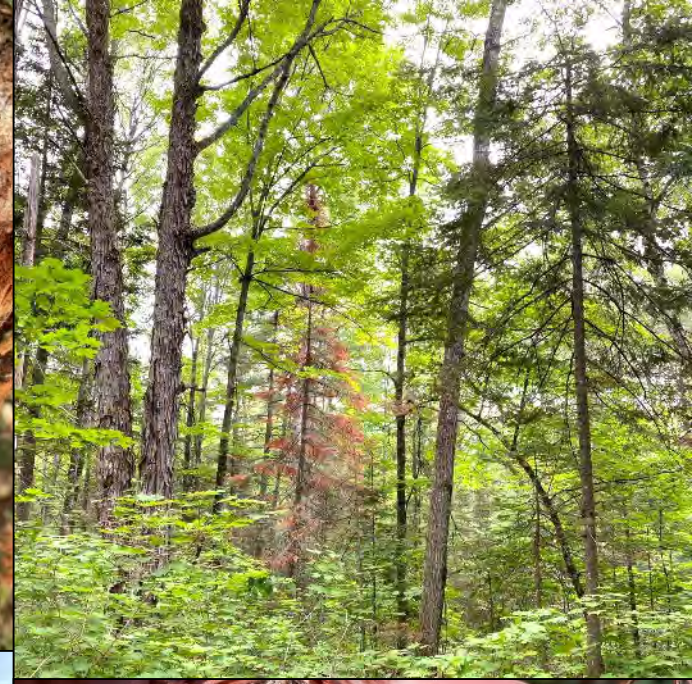


- CoR setting 5-6 traps outside of MNRF mapped area since 2016
- Big jump in finds this year:
 - 2016: 0/5 positive
 - 2017: 1/6 positive
 - 2018: 0/6 positive
 - 2019: 2/5 positive
 - 2020: 5/6 positive
- Spreading steadily along highway corridors with obvious jumps due to movement of wood
- Visual mortality in Arnprior (2013), Renfrew, Deacon, along Highway 17 + 60
- Haven't observed IN RCF yet
- It's real now... come on parasitic wasps!



Sudden Fir Mortality

- Personal observations, other forest workers in County, public inquiries
- “Red and Dead” balsam fir scattered geographically, all types of sites
- Striking, highly noticeable because of quick death.
- Twitter! A wonderful thing.
 - Connected with researchers at UNB
 - Has occurred in the past
- Not one cause, mysterious sequence of events
- Armillaria root rot is a factor in the death, but its presence is exasperated by several factors including drought, hot spring temperatures, fast melts, changes in groundwater levels, and bark beetles.
- Previous studies have shown that although SFM appears widespread on the landscape, often less than 1% of balsam fir are actually affected.



Beech Bark Disease

- An understated problem, on radar here since 2013
- Very widespread now
- Presence and decline seems to be accelerating in our forests
- Serious impact
 - Sprouts outcompete regeneration of other species
 - Decreased mast for wildlife
- So far, haven't put beech on the house... considering changing management direction.
- Why don't we talk more about this?



Climate Change



Severe blowdown, Kennelly Tract (2018 but only discovered this year)



Red pine decline on shallow sites

Shoot Blight on Poplar

- Native, not widespread
- Found on poplar in one clearcut regenerating since 2016
- Kills tip every year, creating “crook” (aka sheppard's hook)
- In places where undersized Po left during harvest, form is poor so maybe has been present for a long time?
- Impacts regeneration success and future wood quality



Year of the Fungi:

What does this mean for trees next year?



Other Observations

Larch Mortality continued



Found some cankered Bn



Joined the garlic mustard club

